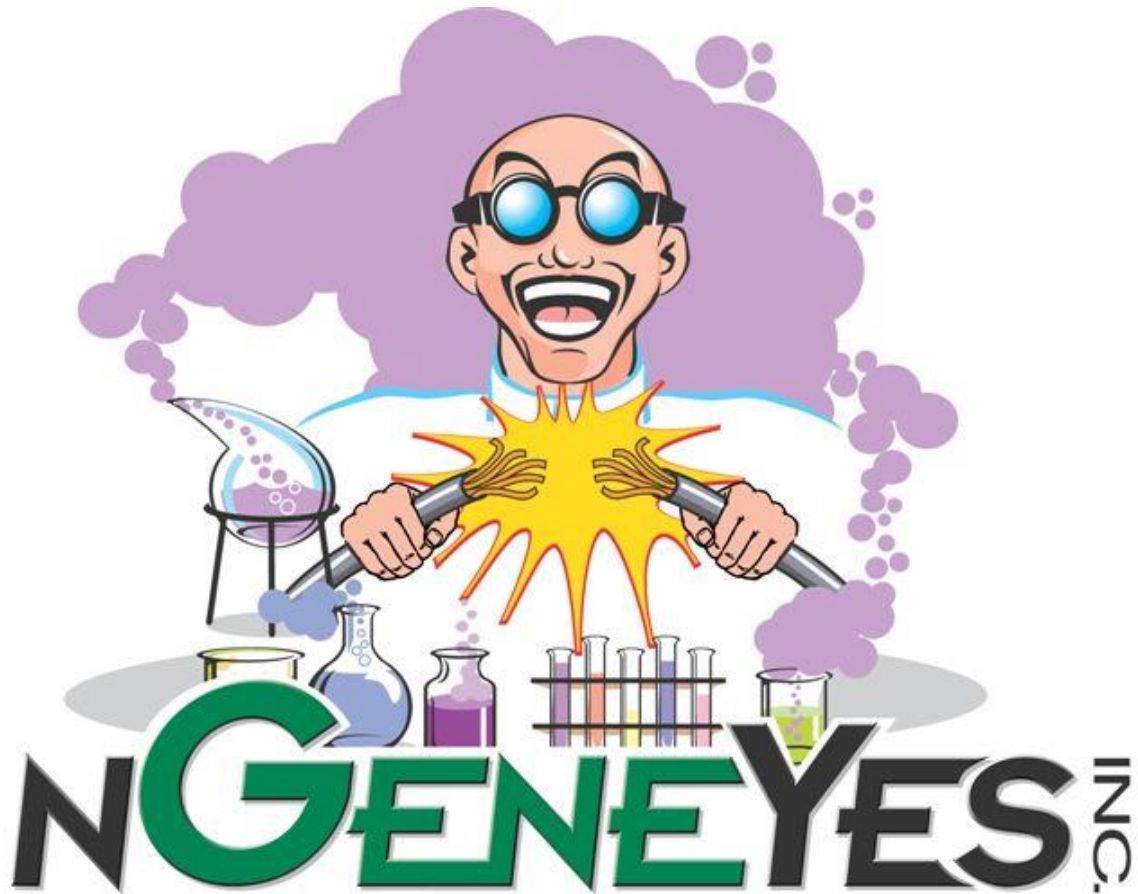


SmartScreens VMWare Settings  
For use with Mach3

## CONFIDENTIAL AND PROPRIETARY



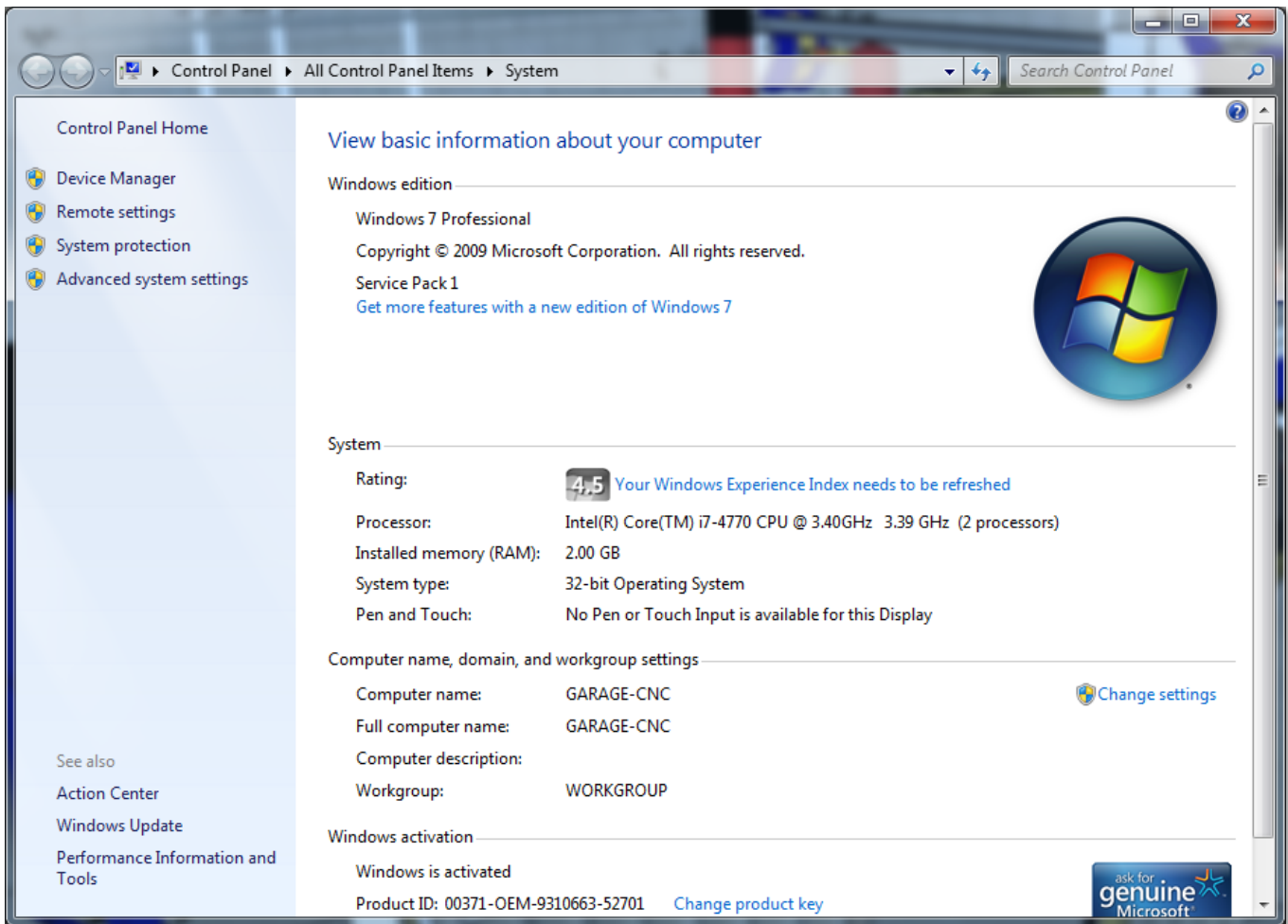
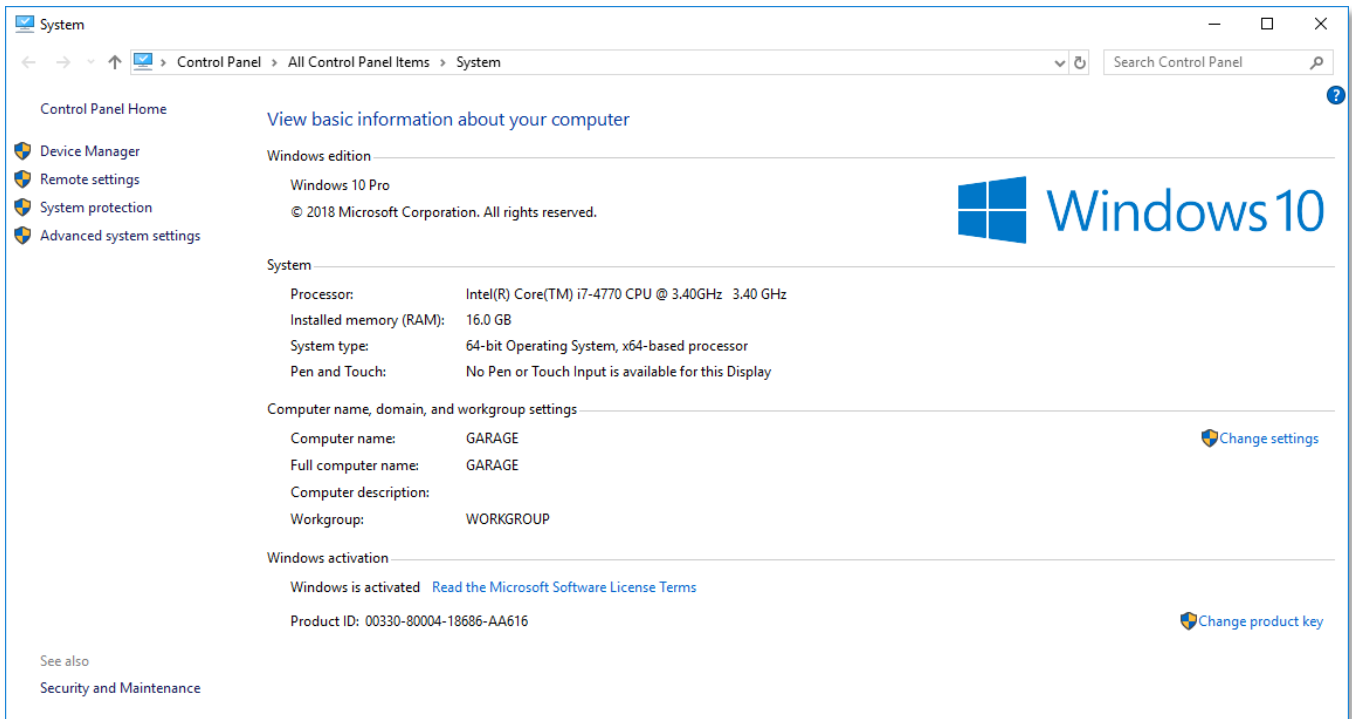
---

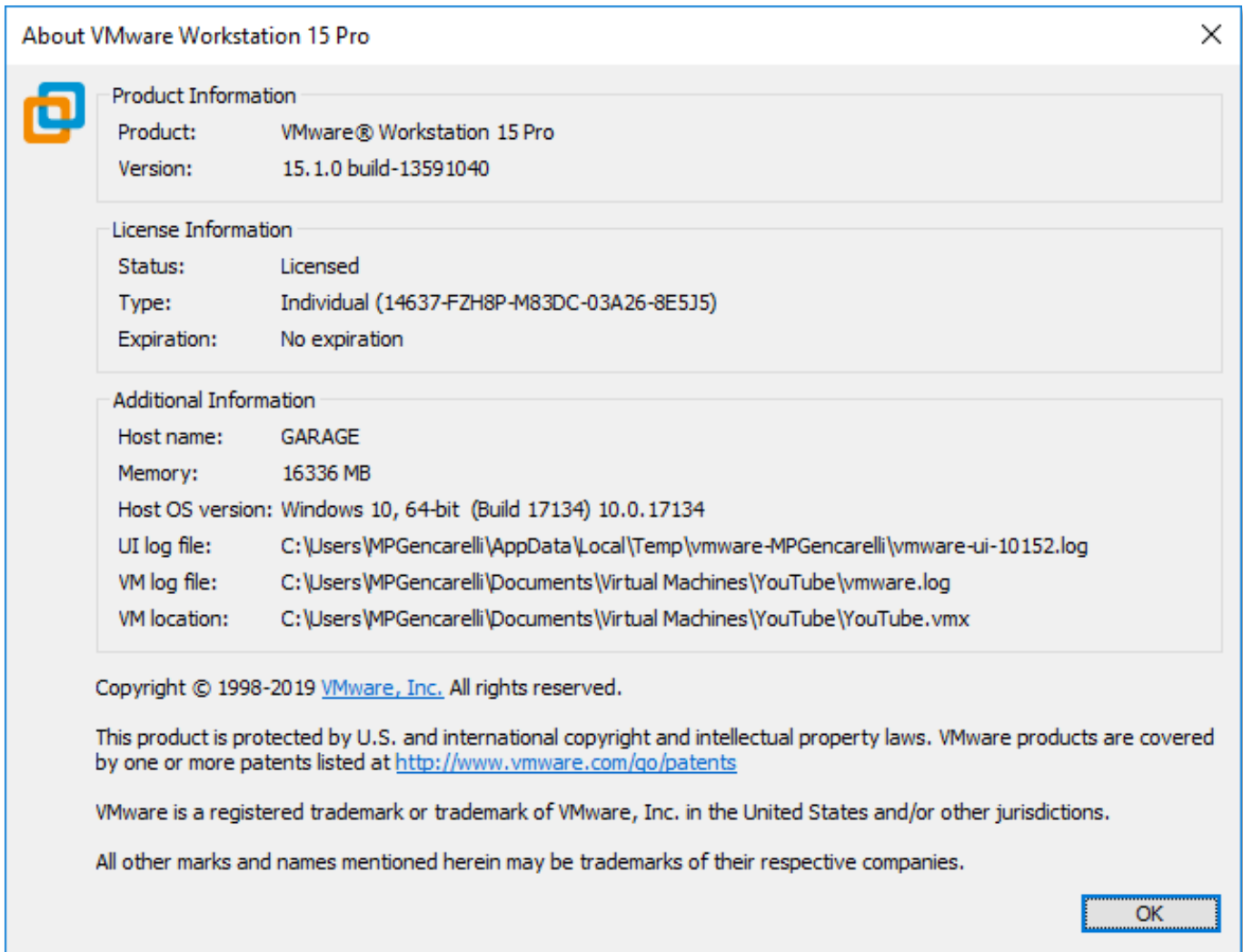
Prepared By:




**nGeneYes, Inc.**

(407) 979-4519  
6526 Old Brick Road  
Suite 120 – 157  
Windermere, FL 34786





**About VMware Workstation 15 Pro** [Close]

 **Product Information**

Product: VMware® Workstation 15 Pro  
Version: 15.1.0 build-13591040

**License Information**

Status: Licensed  
Type: Individual (14637-FZH8P-M83DC-03A26-8E5J5)  
Expiration: No expiration

**Additional Information**

Host name: GARAGE  
Memory: 16336 MB  
Host OS version: Windows 10, 64-bit (Build 17134) 10.0.17134  
UI log file: C:\Users\MPGencarelli\AppData\Local\Temp\vmware-MPGencarelli\vmware-ui-10152.log  
VM log file: C:\Users\MPGencarelli\Documents\Virtual Machines\YouTube\vmware.log  
VM location: C:\Users\MPGencarelli\Documents\Virtual Machines\YouTube\YouTube.vmx

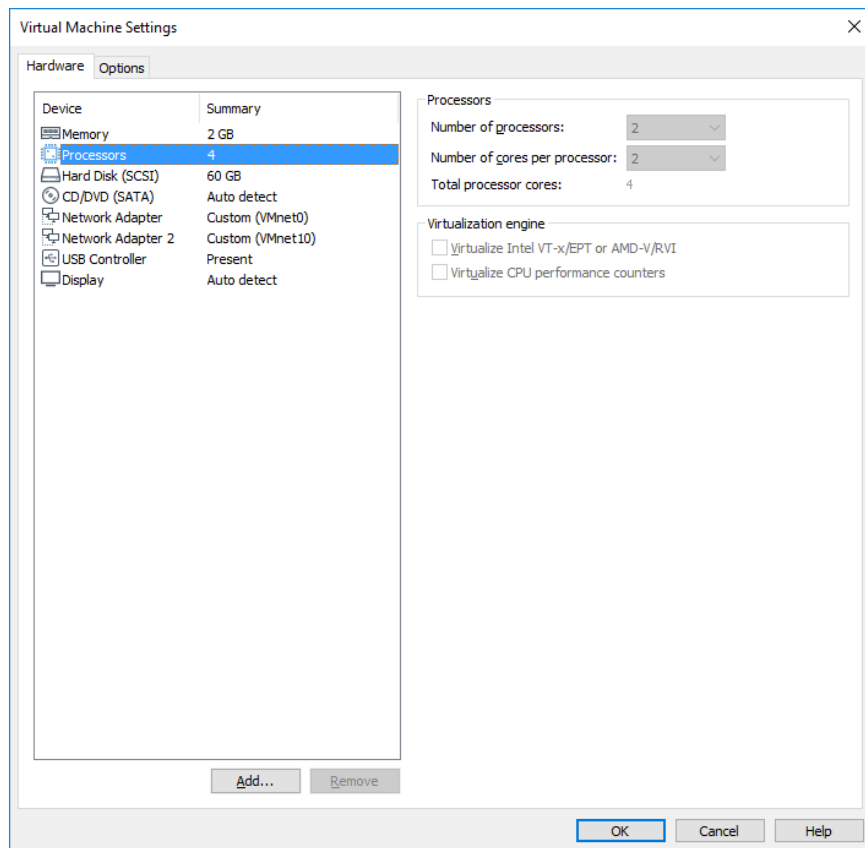
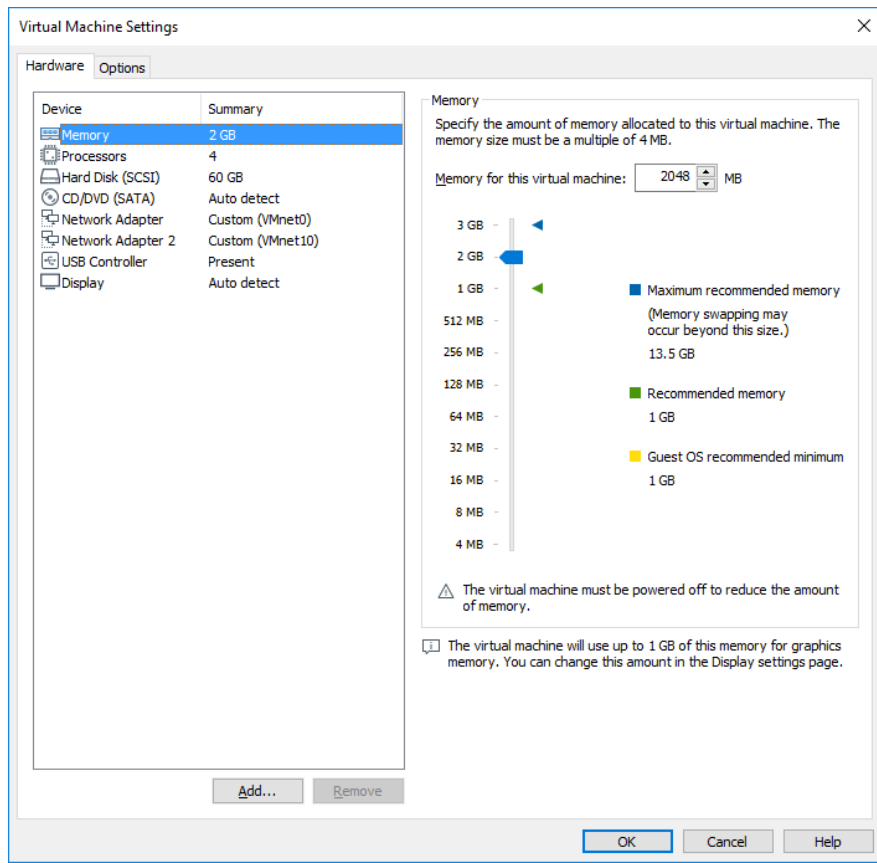
Copyright © 1998-2019 [VMware, Inc.](http://www.vmware.com) All rights reserved.

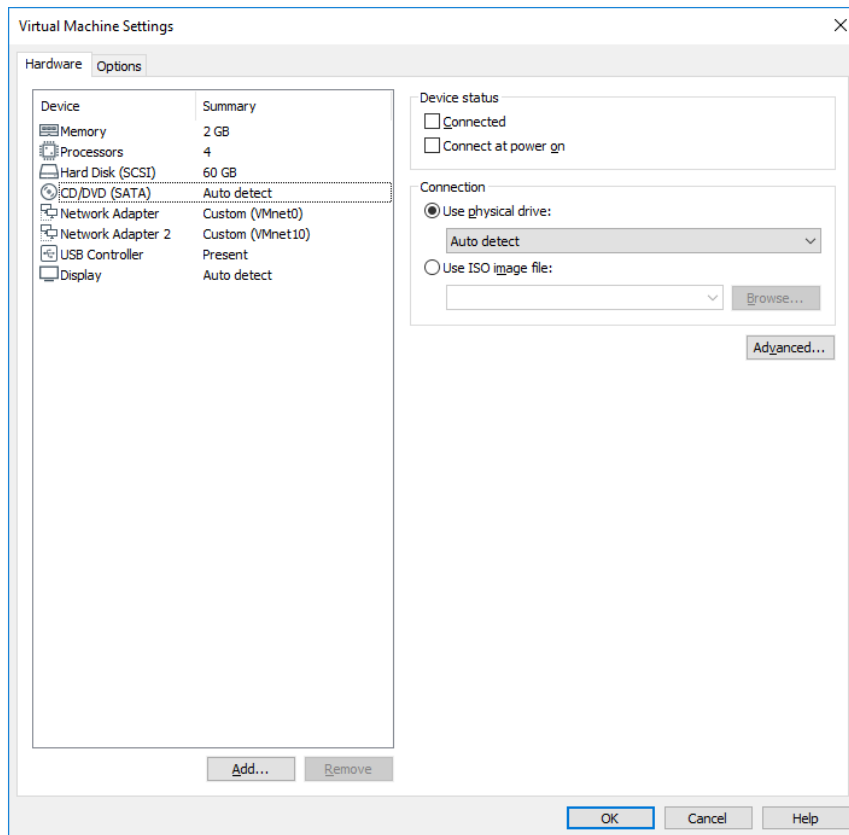
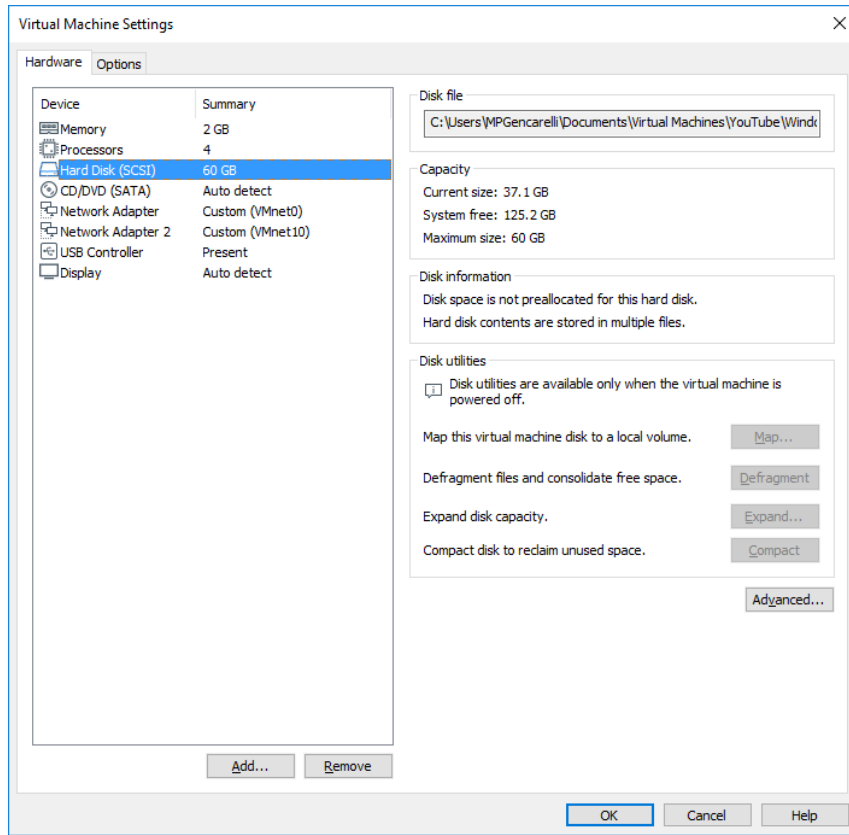
This product is protected by U.S. and international copyright and intellectual property laws. VMware products are covered by one or more patents listed at <http://www.vmware.com/go/patents>

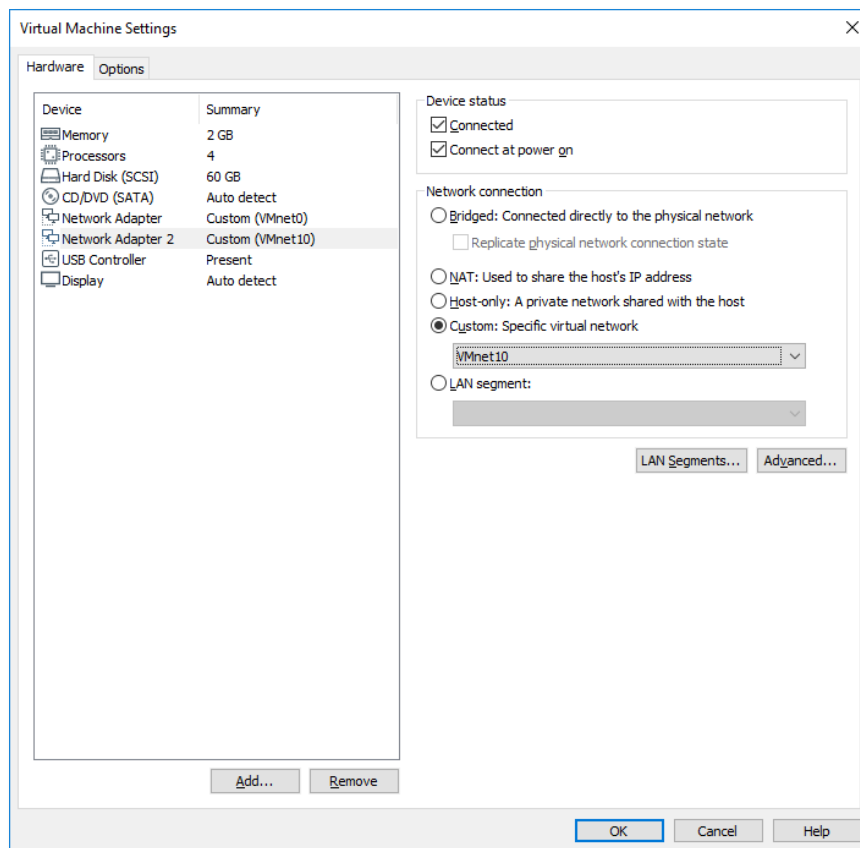
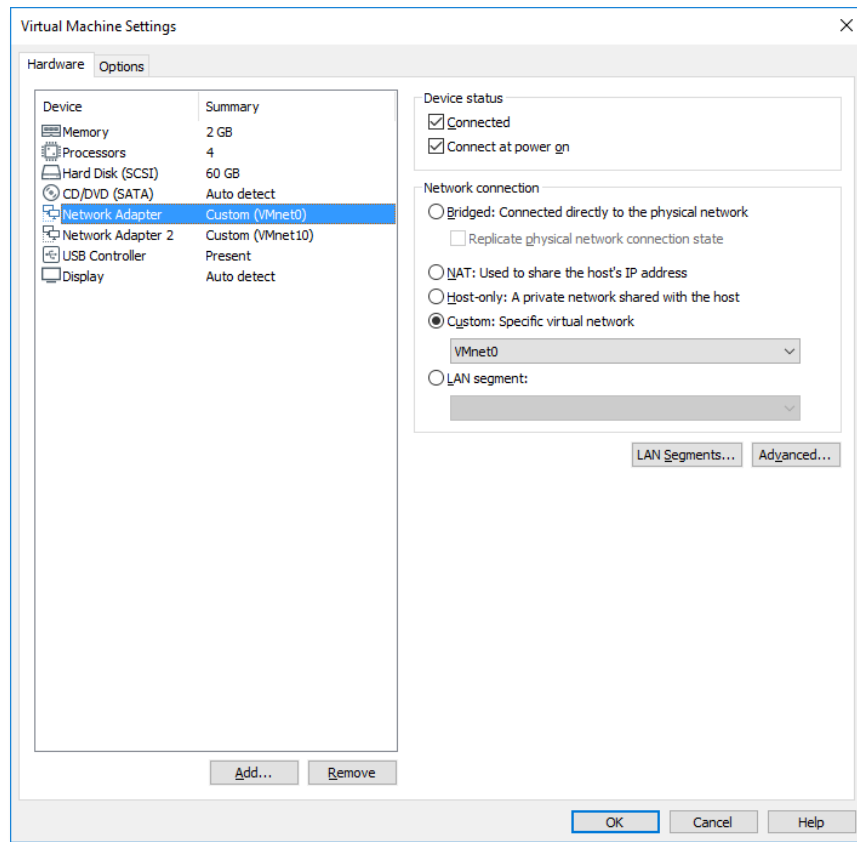
VMware is a registered trademark or trademark of VMware, Inc. in the United States and/or other jurisdictions.

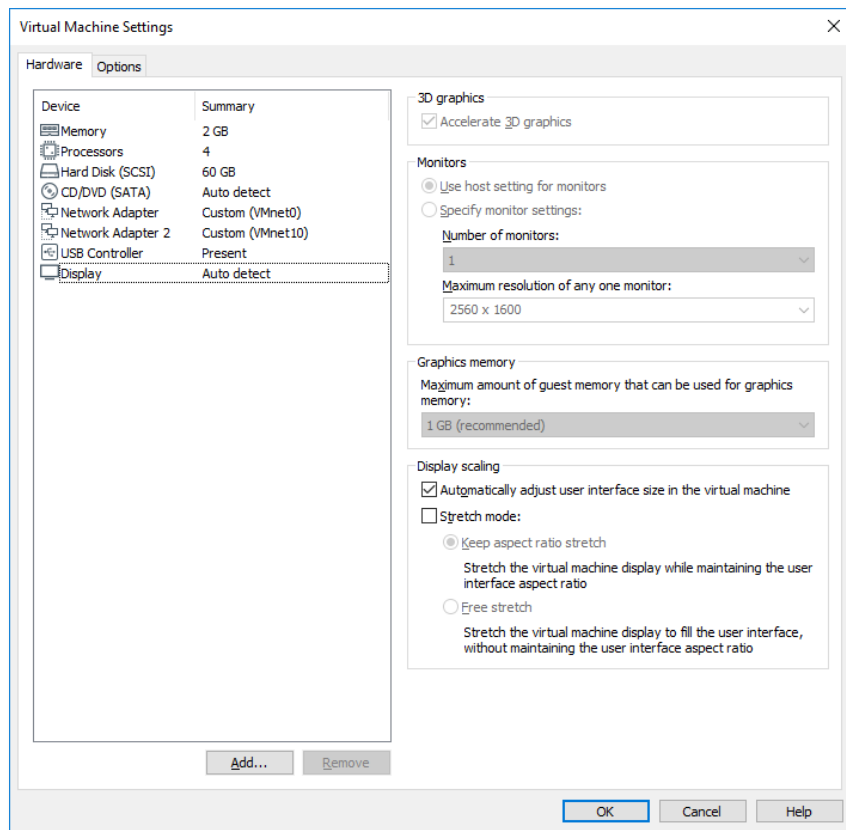
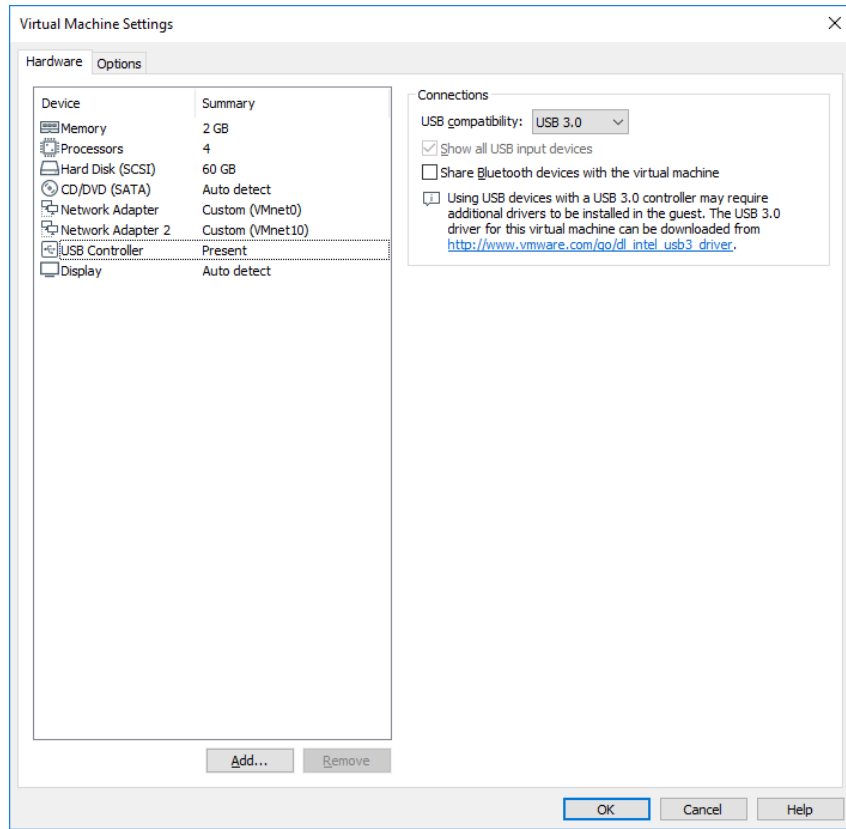
All other marks and names mentioned herein may be trademarks of their respective companies.

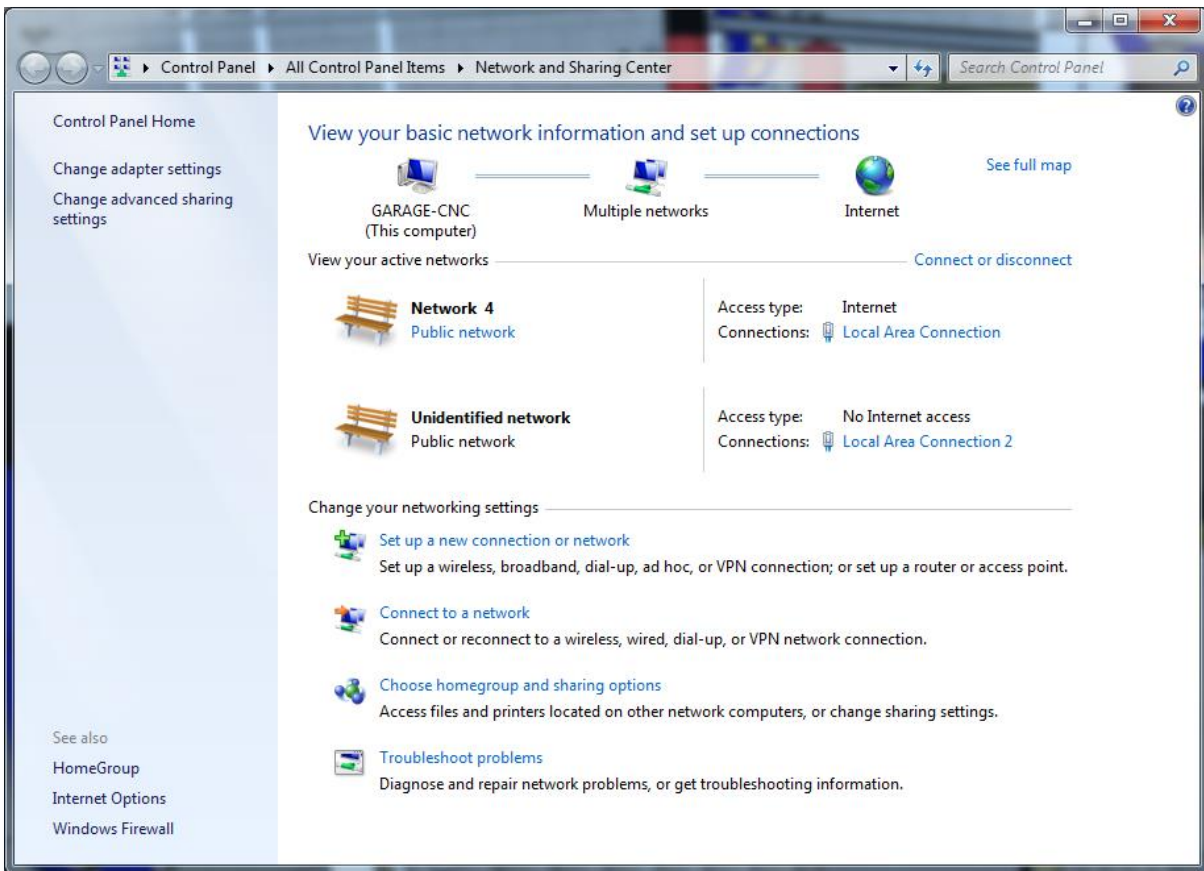
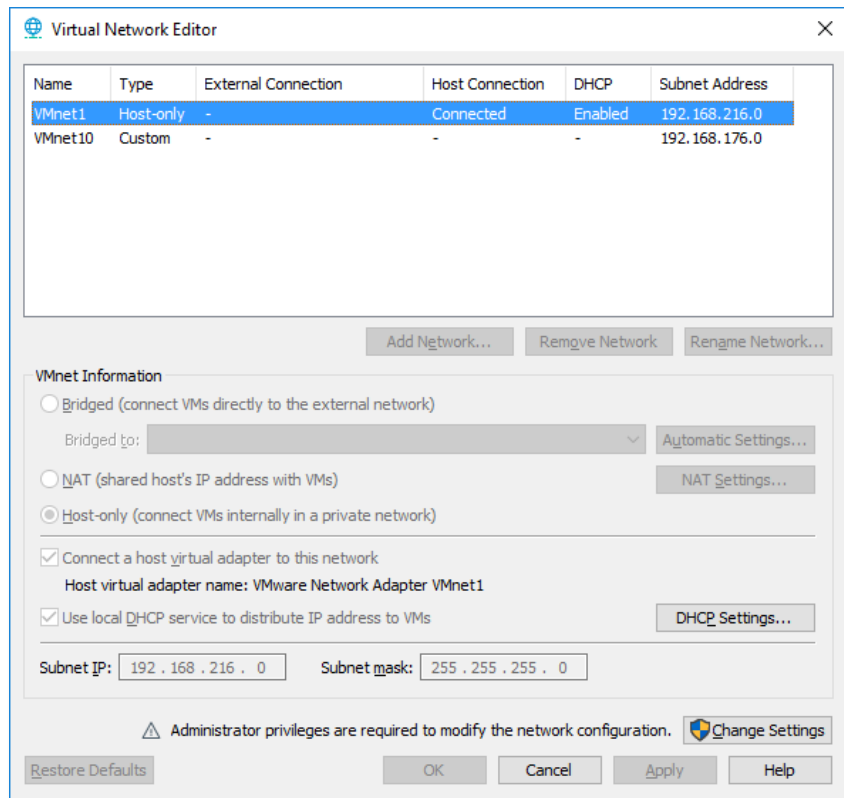
[OK]



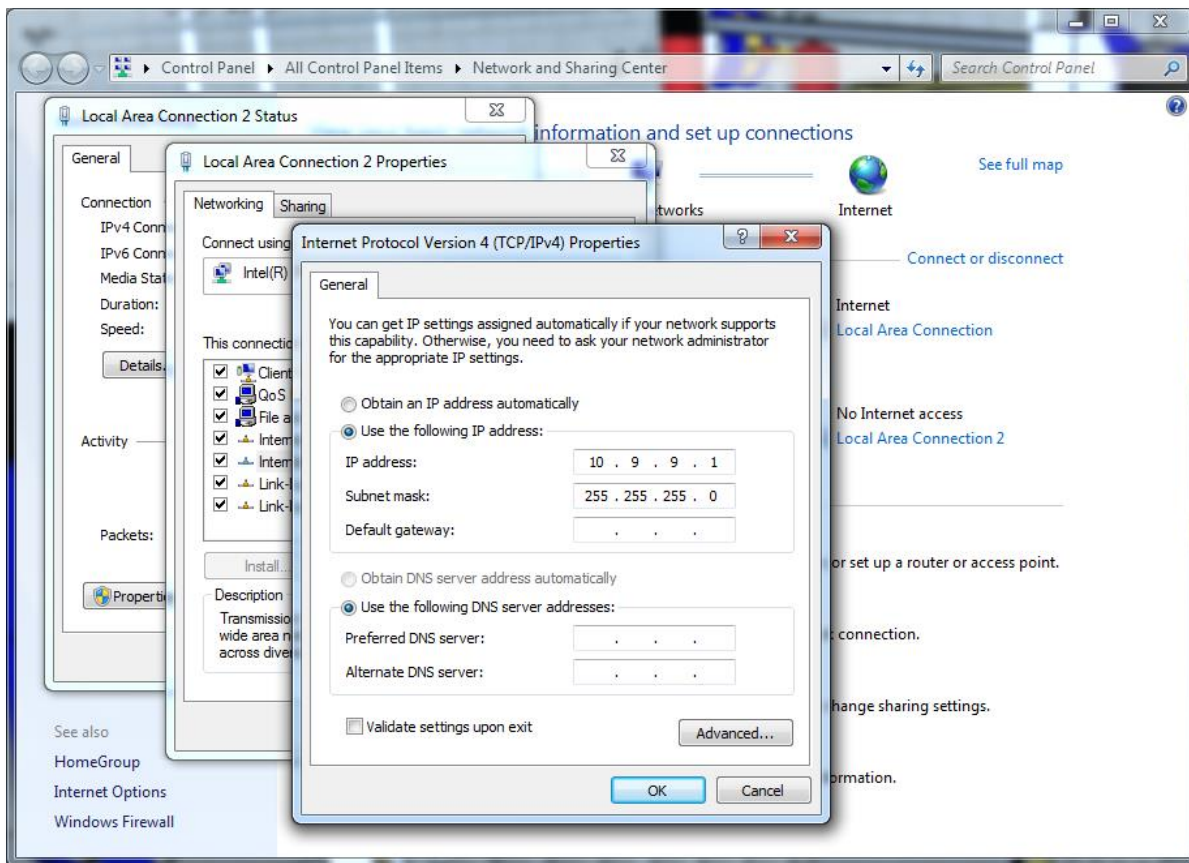
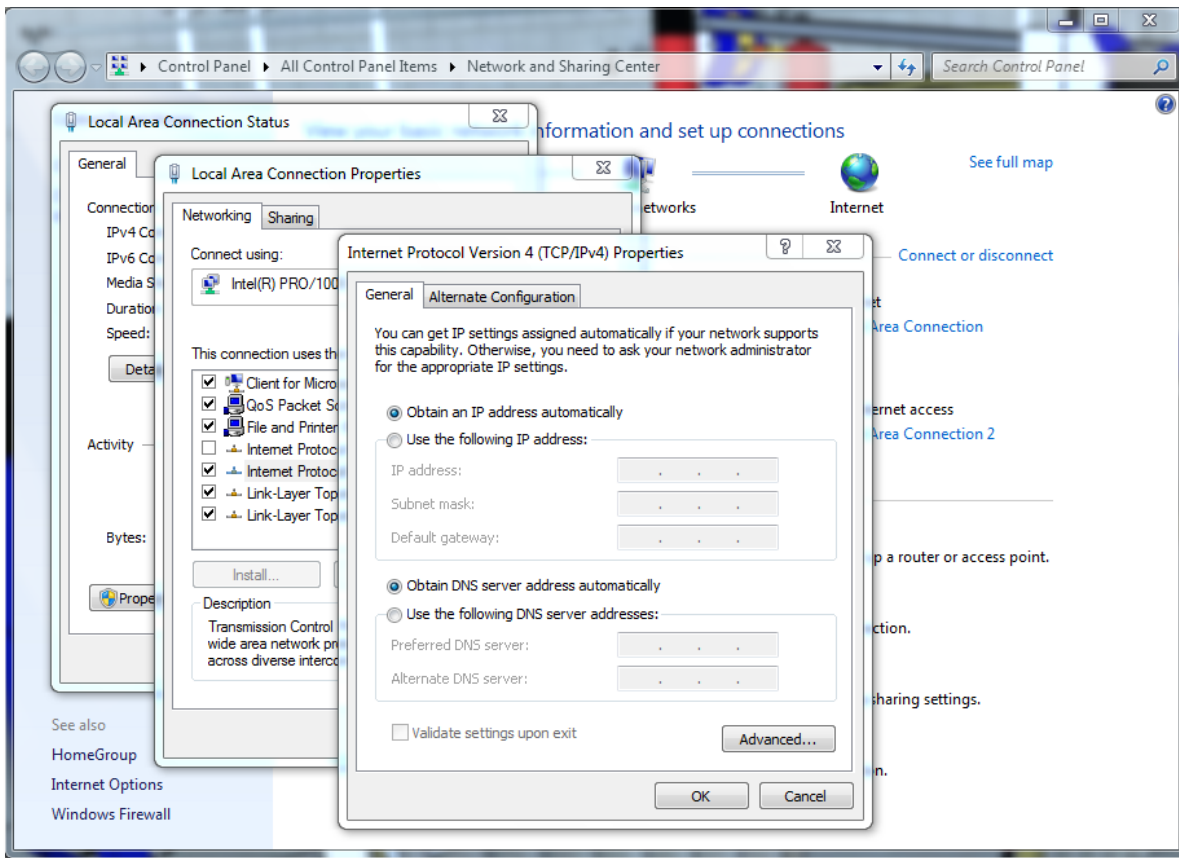


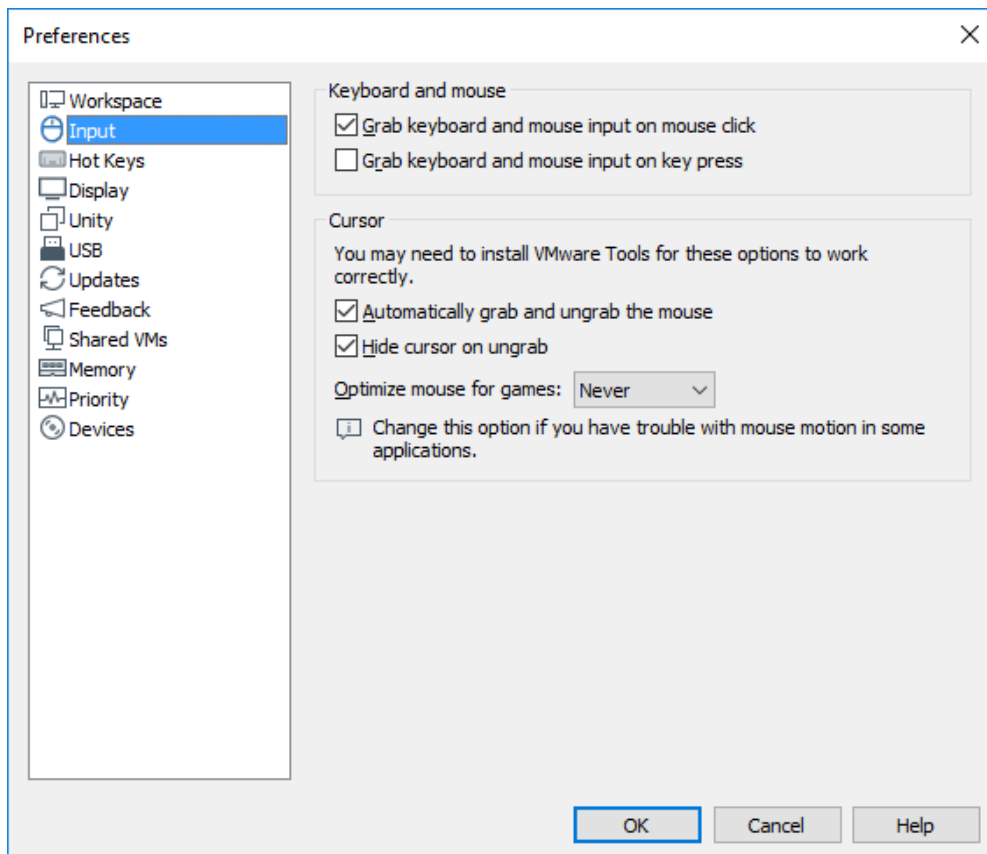
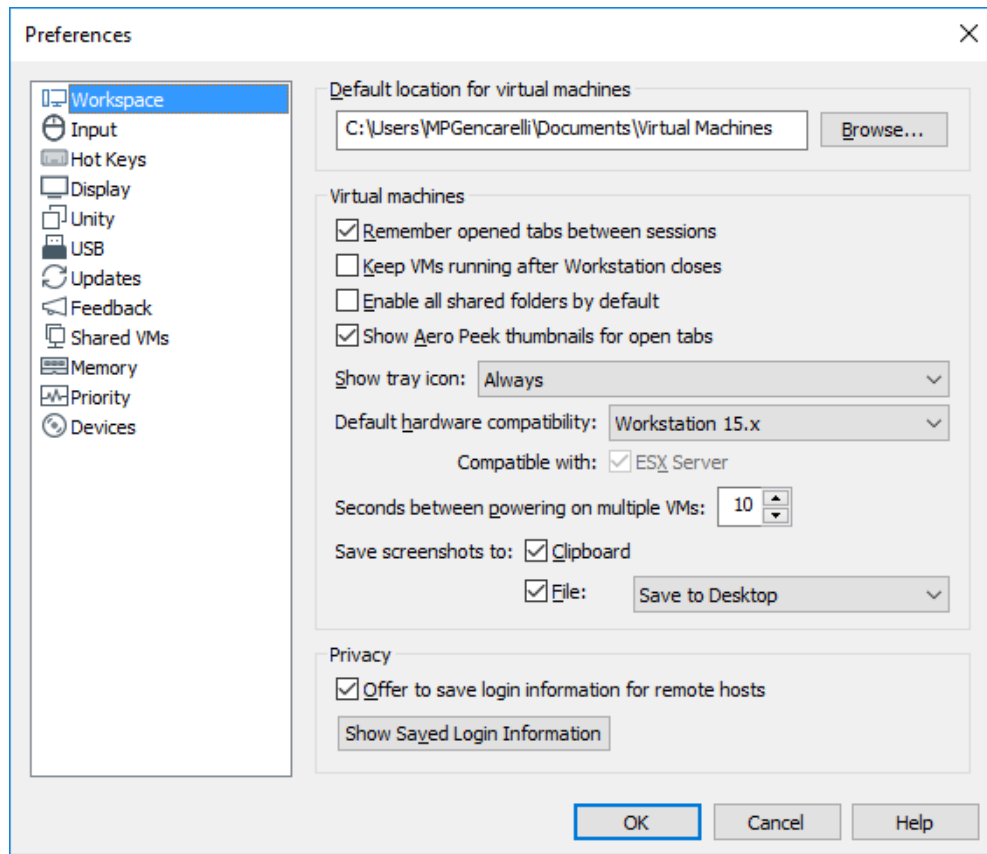


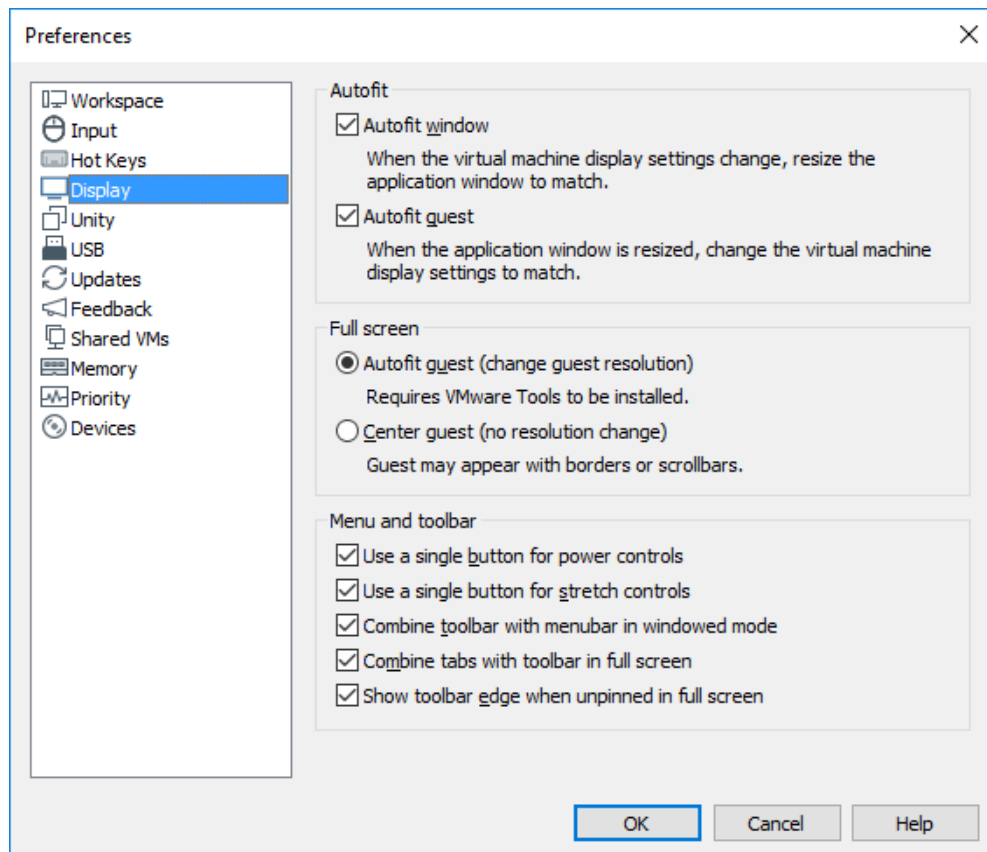
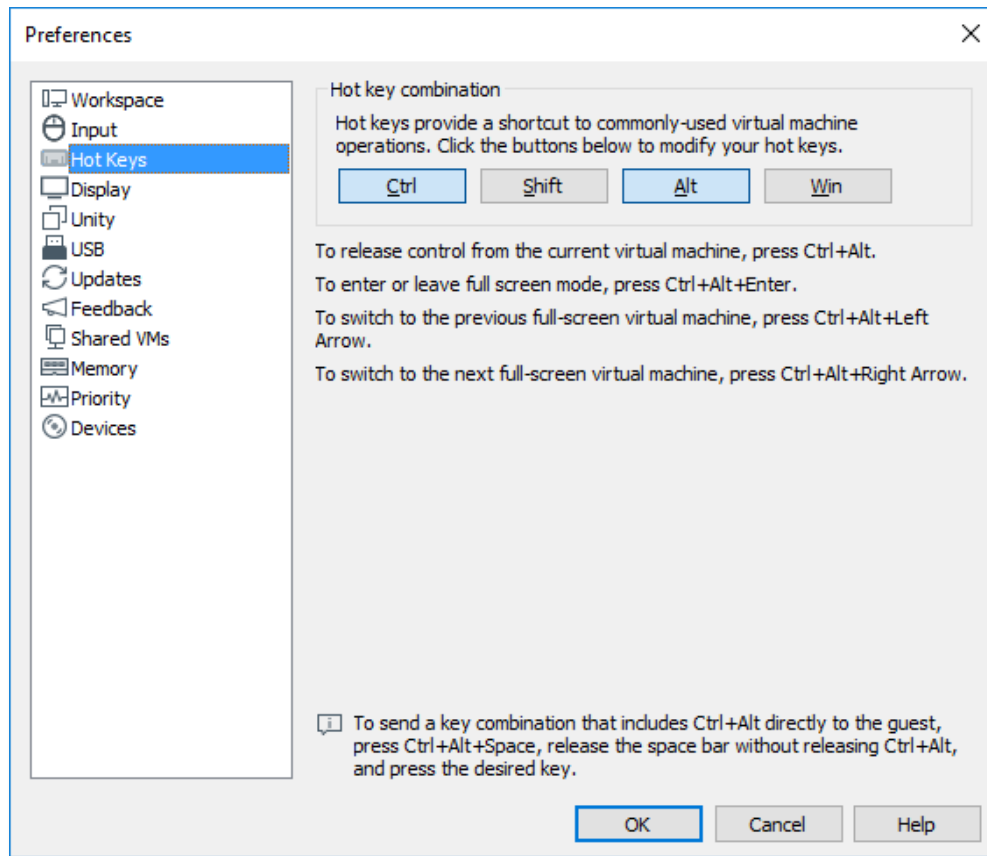


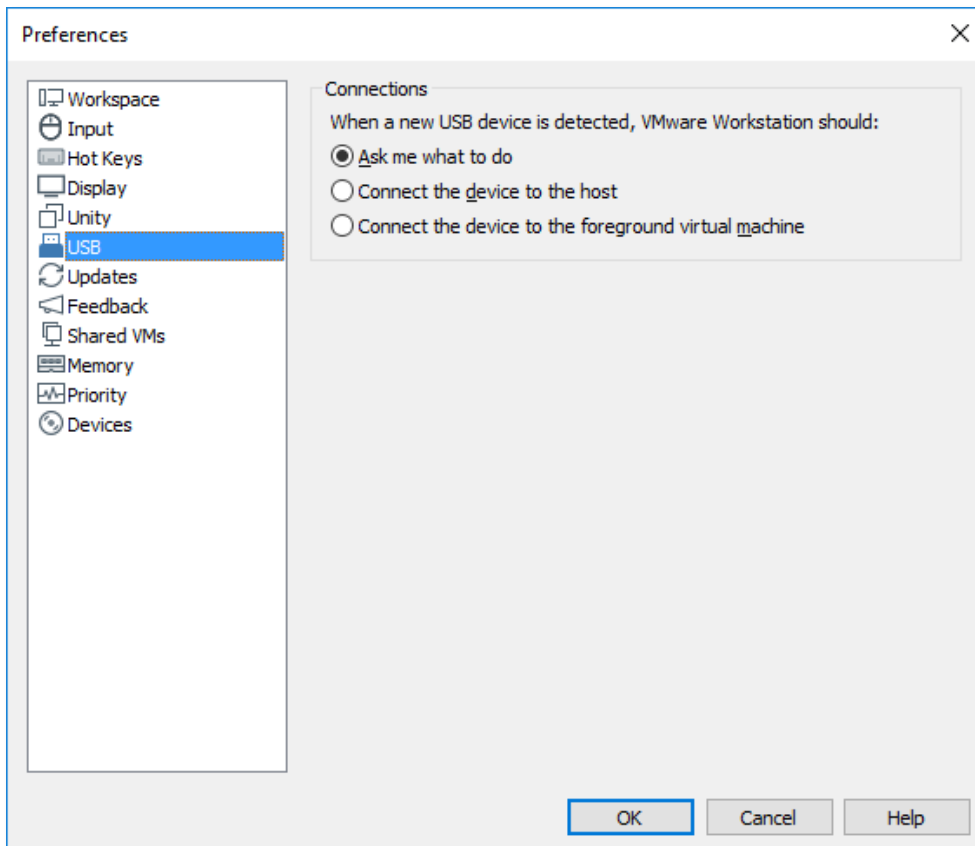
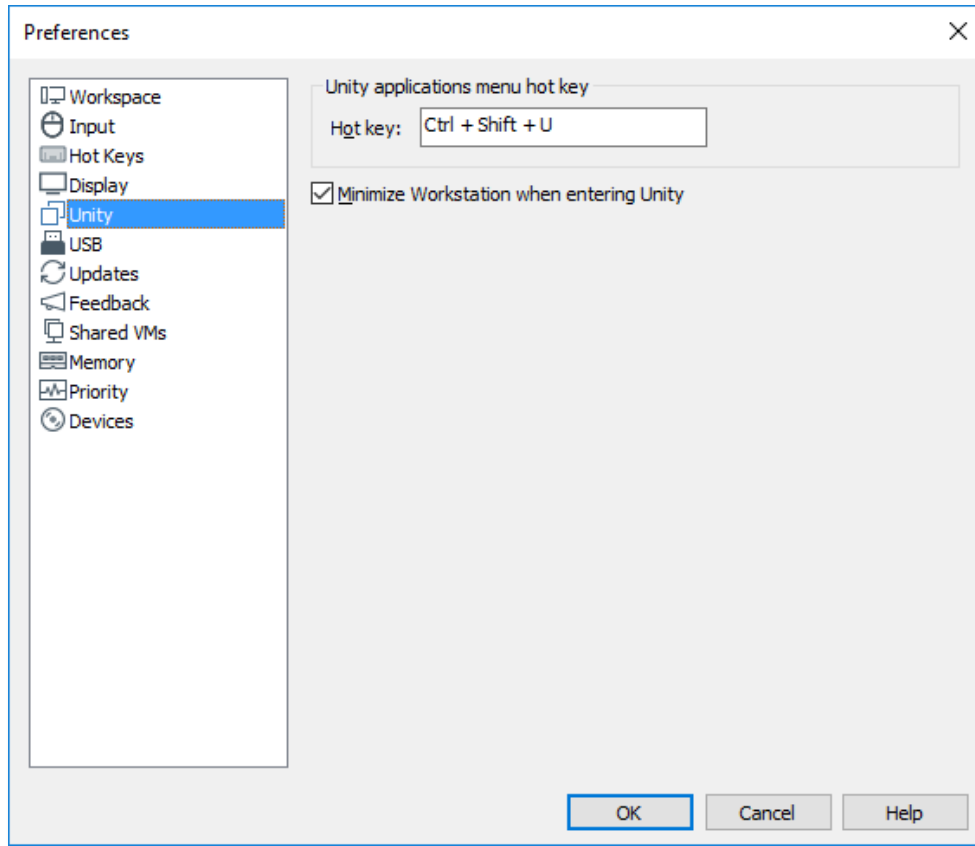












### This is an important setting

VMWare cannot be trying to update WHILE Mach3 is running.  
This will cause issues. So, adjust your settings as shown below.

